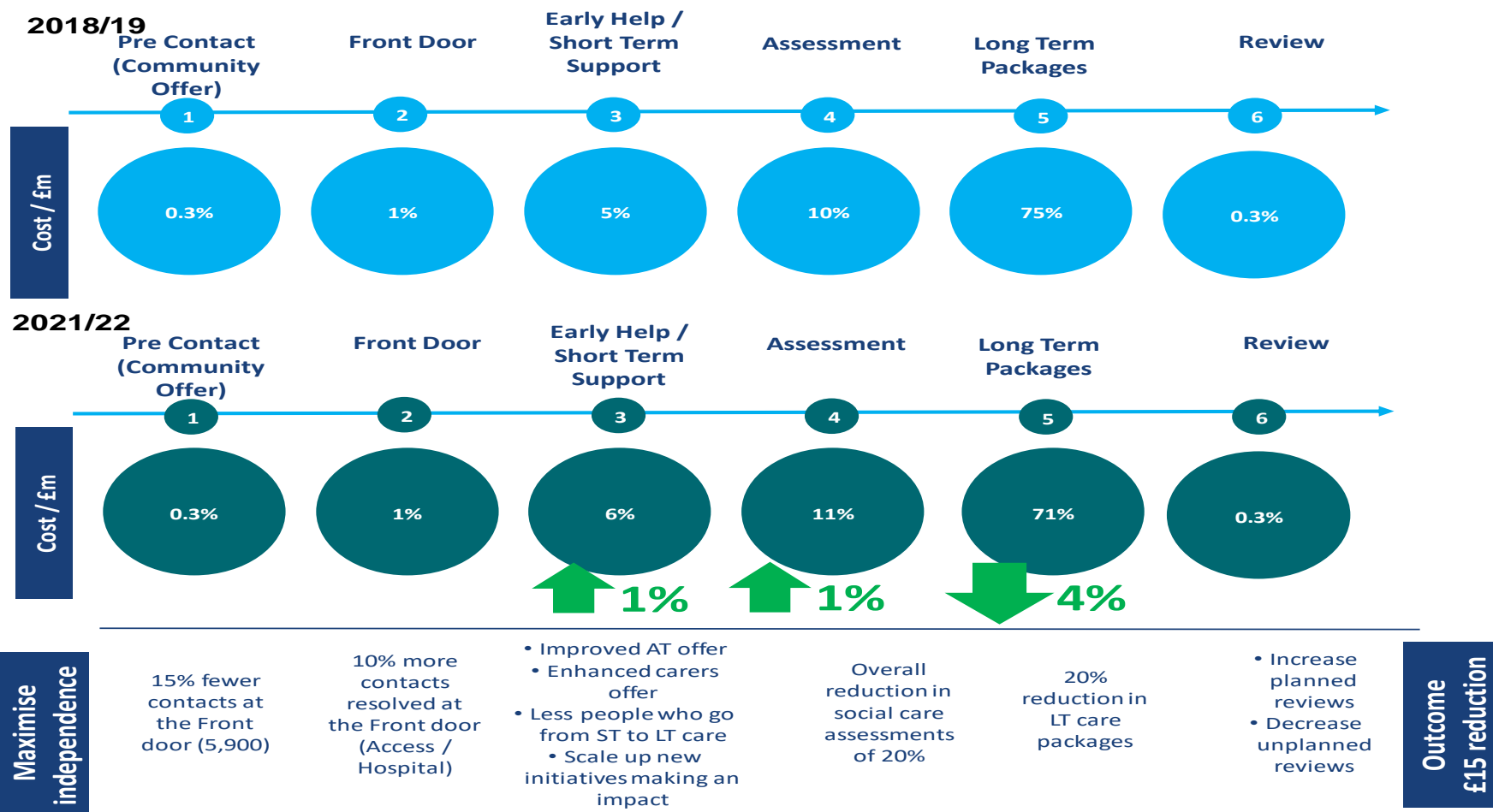


# Demand and Finance Trajectories: **The Challenge**

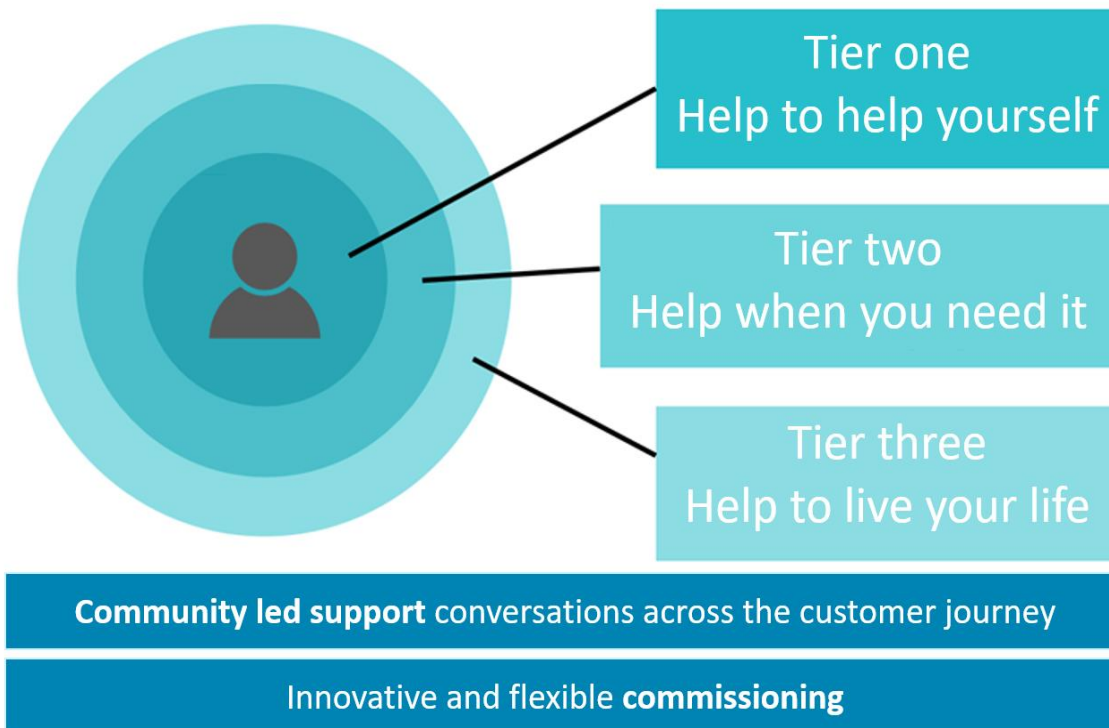
A key factor in enabling us to take this approach is a generous financial settlement we have received from the corporate centre. An **investment of £6m to balance our budget** on top of a reduction in our savings trajectories over the **next 3 years to £15m**, a challenging but more realistic and achievable target. However we must deliver and this requires everybody to contribute!

In delivering these trajectories, we are also looking to change the flow of investment into early help and prevention, ultimately reducing long term care.



# The Three Tier Approach

- We worked with staff to develop a new 3-Tier Approach for the department
- Underpinned by Community-Led Support; with staff working in localities to better understand local resources and the need of the community
- We have tested this approach in Access and LD Reviews



# Each tier supports a different offer



**Key:**

- 1. Help to help yourself**
  - Personal network
  - Community network
- 2. Help when you need it**
  - Professional led interventions
- 3. Help to live your life**
  - Long term care

Regardless of the level of need an individual has, 'help to help yourself' should be considered for all adults and has the potential to reduce the levels of temporary or on-going support required, as well as to improve their independence outcomes

# 3 tier approach mapped against operating model

Help to help yourself

Self Care

Help when you need it

Prevention and Early Help

Help to live your life

Eligibility

Ongoing Support

Living independently

Promotion of healthy living and development of communities

Accessible advice and support for the whole community

Hospital

Access

Transitions / LD Entry

Early help support

Enablement

Care Act Assessment

Ongoing support

Review

End of life pathway